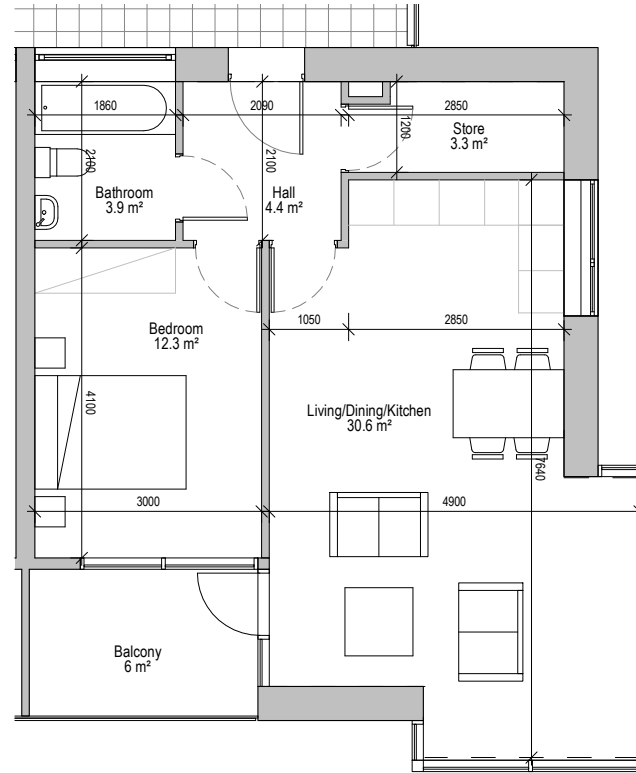
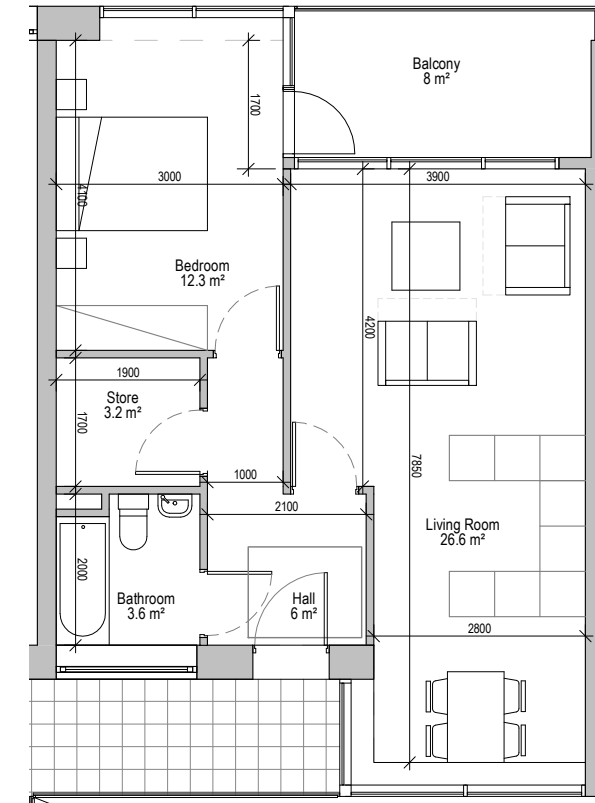


① AT06 1 BED 50.7 SQM
1 : 100



② AT06a 1BED 56.2 SQM
1 : 100



③ AT08 1 BED 53.4 SQM
1 : 100

Apartment Type AT06, AT06a and AT08

FOR BALCONY/TERRACE AREAS, PLEASE REFER TO GA PLANS OR HQA.

Revision Description	Date	Rev. No.	Issued by

omahony pike

architecture | urban design | Dublin | Cork
 email: info@omahonypike.com | The Chapel | 26 South Mall
 tel: +353 1 202 7400 | Mount St. Anne's | Cork City
 fax: +353 1 283 0822 | Milltown, Dublin 6 | Co. Cork
 www.omahonypike.com | D06 XNS2 Ireland | T12 R2RV Ireland

Project No.: 1627
 Project Lead: JM
 Drawn By: Author
 Model No.: 1627-OMP-AB06-ZZ-M3-A-XX-00001
 Purpose: Planning
 Scale @ A3: 1 : 100
 Date Printed: OCT 2019
 Current Rev.:

Project: Saint Paul's Residential Development
 Location: Sybil Hill Road, Raheny, Dublin.
 Client: CREKAV TRADING GP LTD

Drawing Title: Apartment Type AT06, AT06a and AT08
 Drawing No.: 1627-OMP-AT-ZZ-DR-A-XX-11003

Figured dimensions only to be used. This drawing is copyright of O'Mahony Pike Architects Ltd. All information is shared as per approved use in accordance with BS1192(2007)+A2(2016), Table 5, Standard Codes for Suitability of Models and Documents. If 'Information Approval Check' is empty, this information has been shared at 50 - WIP.

Suitability - Checked By - Date